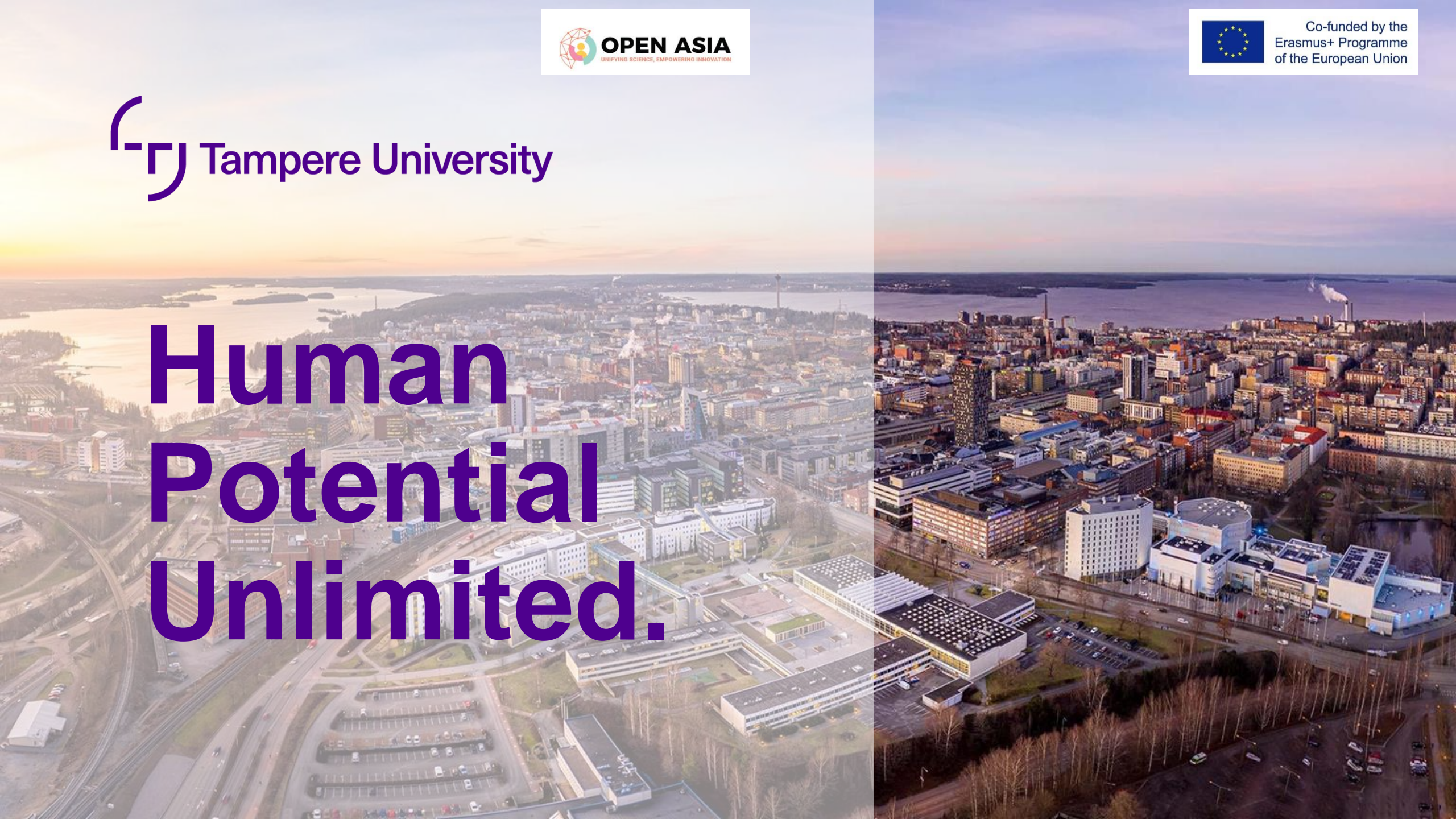


Human Potential Unlimited.



Tampere, Finland

- Tampere is the second-largest urban area in Finland and the largest inland city in the Nordic Countries.
- Tampere University is the second largest university in Finland.



The new foundation-based Tampere University was established through the merger of Tampere University of Technology and the University of Tampere in 2019.

Tampere University Foundation, which operates as Tampere University, is the main owner of Tampere University of Applied Sciences (TAMK).

Tampere University at a glance

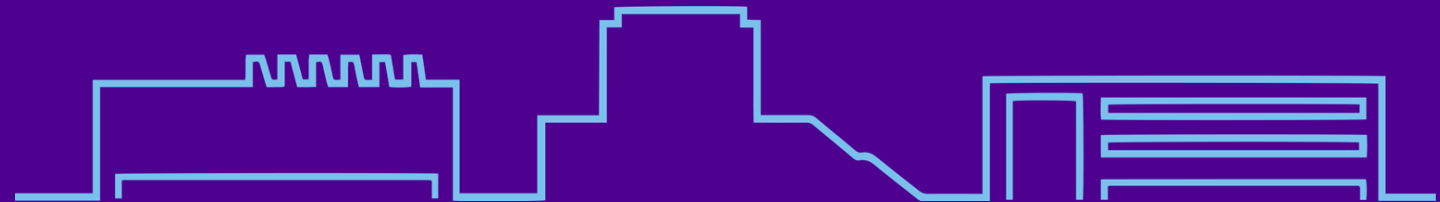
7

faculties

10

fields of
education

We are spread across three campuses in Tampere...



City centre campus

Hervanta campus

Kauppi campus

...and have a presence at the university consortia
in Pori and Seinäjoki.

**We are a
community of
26,000 people!**

4,200 employees of whom **20%** are international staff

22,000 students of whom **8%** are international students

Tampere Universities at a glance



Tampere University and Tampere University of Applied Sciences (TAMK) comprise the multidisciplinary Tampere Universities community, the second largest higher education community in Finland.



Community

5,000

employees

33,500

degree students



research



academic education



university of applied
sciences



continuous learning

Our University comprises seven faculties

- Faculty of Built Environment
- Faculty of Education and Culture
- Faculty of Engineering and Natural Sciences
- Faculty of Information Technology and Communication Sciences
- Faculty of Management and Business
- Faculty of Medicine and Health Technology
- Faculty of Social Sciences



Our University's leadership

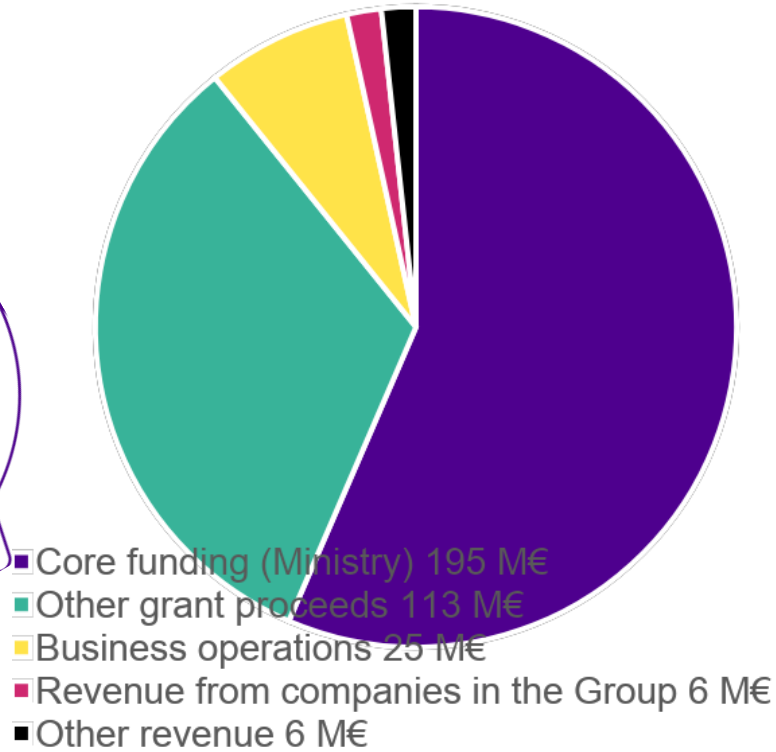
- President **Keijo Hämäläinen**
- Vice President for Education **Marja Sutela**
- Vice President for Research **Tapio Visakorpi**
- Vice President for Stakeholder Relations and Partnerships **Jarmo Takala**



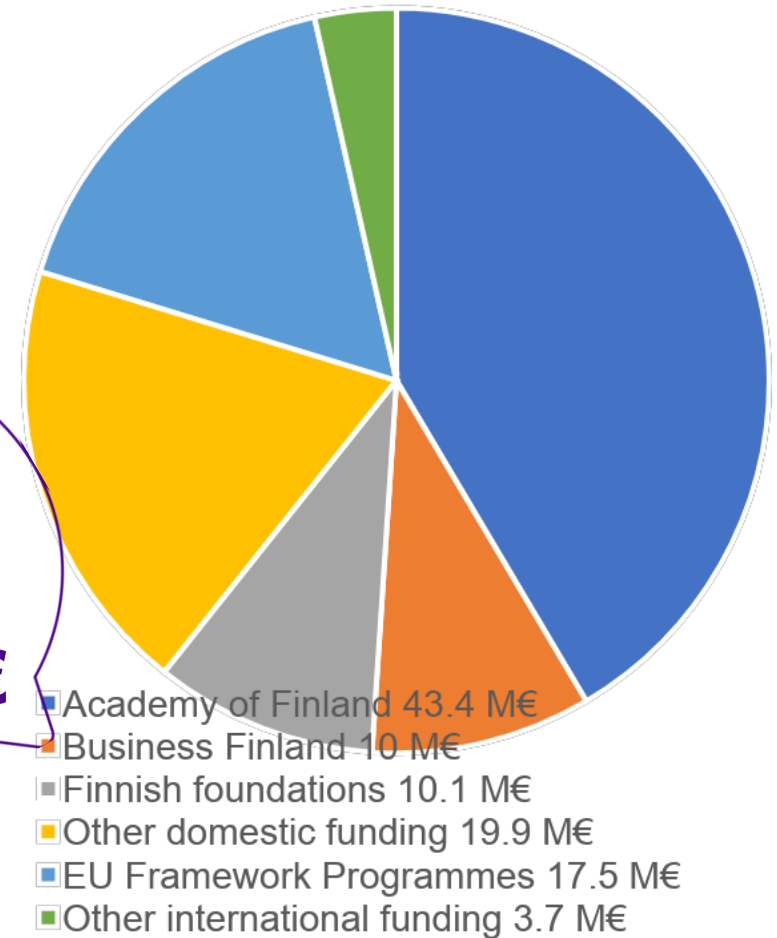
President Keijo Hämäläinen

Our funding in 2022

Revenue from
ordinary
operations
345 M€

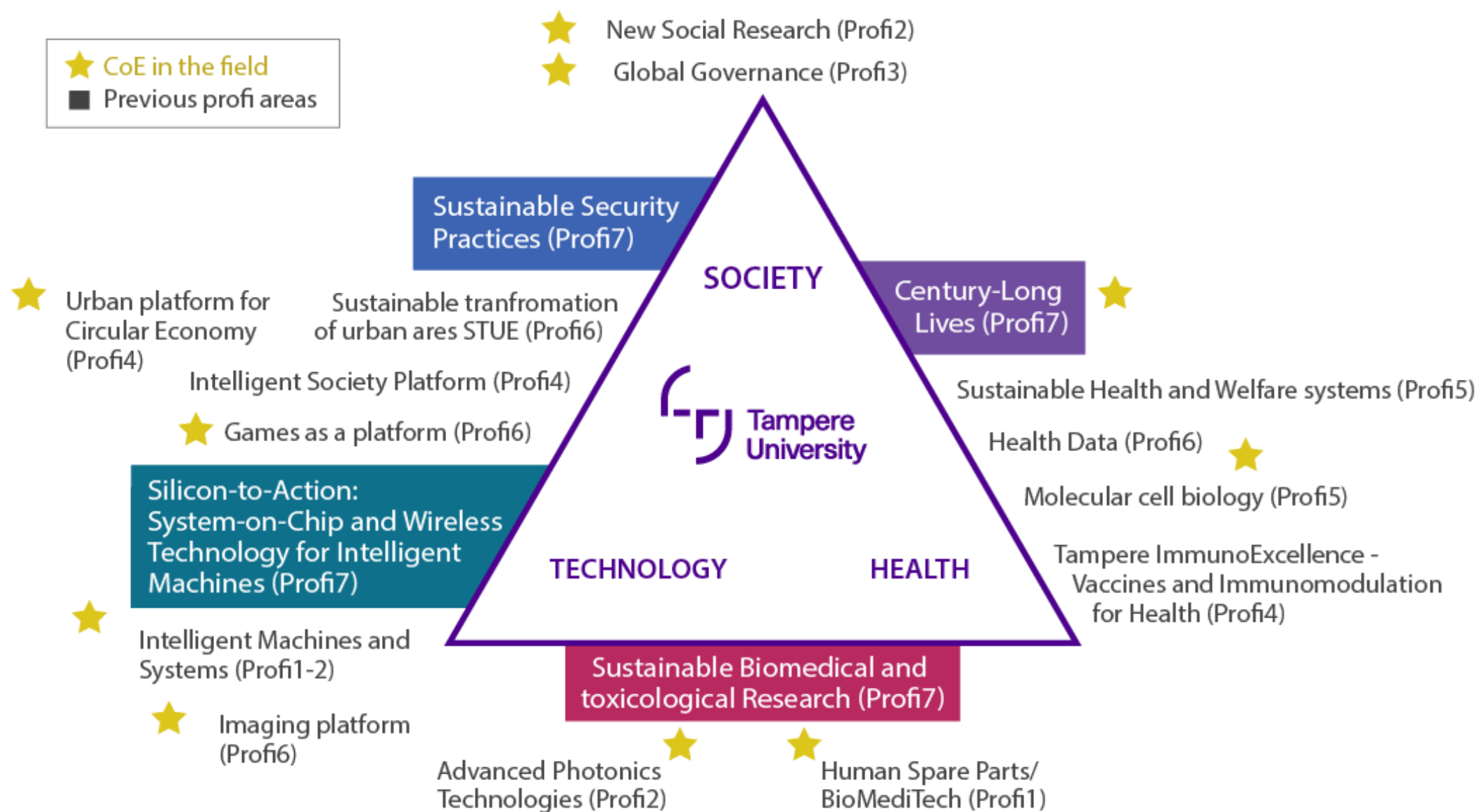


Competitive
research
funding
104.6 M€





Our research excellence



We coordinate four Research Council of Finland's Centres of Excellence (altogether 23 CoEs in Finland)

- Centre of Excellence in Body-on-Chip Research
- Centre of Excellence in Game Culture Studies
- Centre of Excellence in History of Experiences
- Centre of Excellence in Tax Systems Research



We are part of six Centres of Excellence (altogether 23 CoEs in Finland)

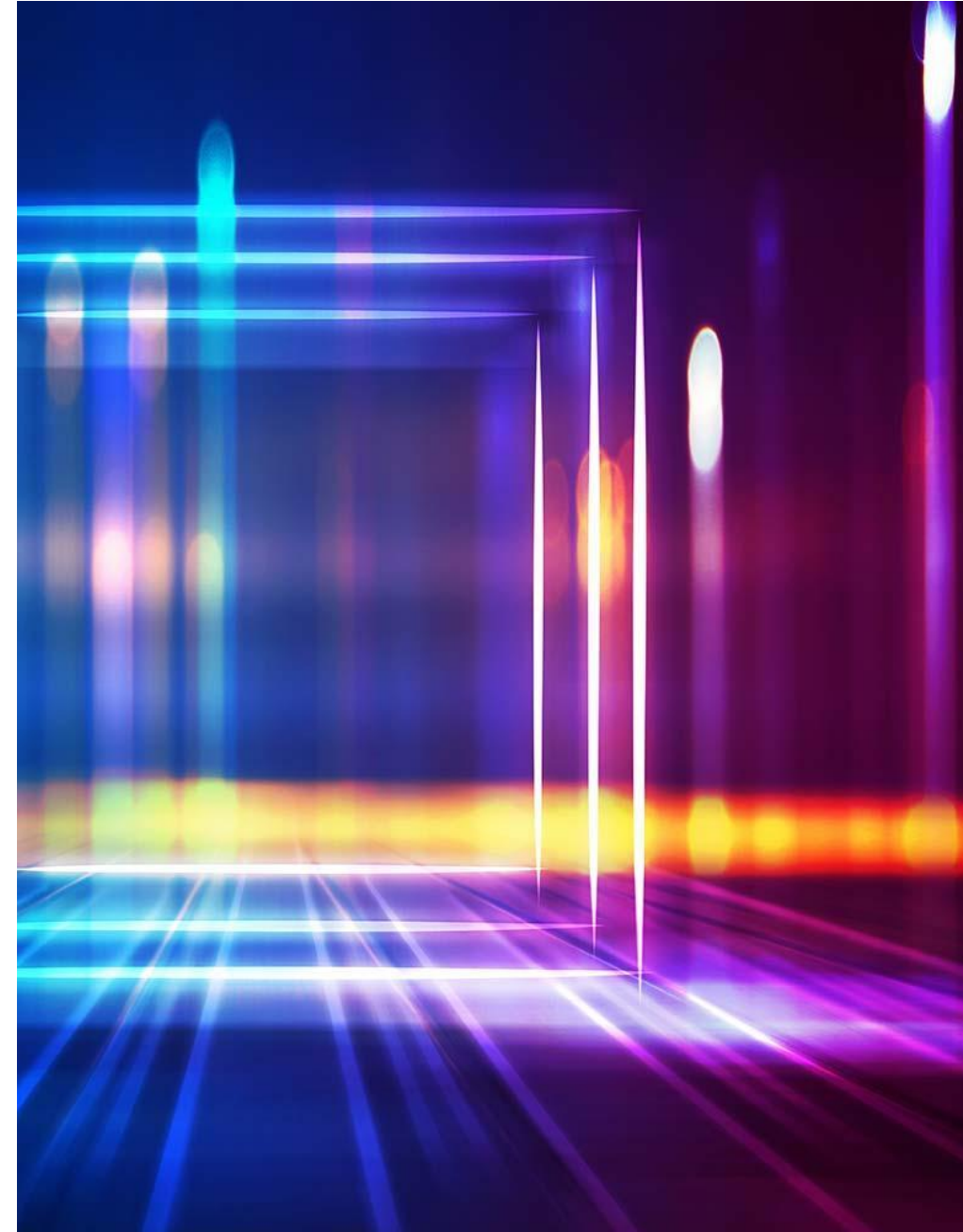
- Centre of Excellence in Research on Ageing and Care
- Centre of Excellence in High-Speed Electromechanical Energy Conversion Systems
- Centre of Excellence of Inverse Modelling and Imaging
- Centre of Excellence in Life-inspired Hybrid Materials
- Centre of Excellence in Tumour Genetics Research
- Virtual laboratory for molecular level atmospheric transformations



Research Council of Finland's Finnish Flagship Programme (altogether 14)

- We coordinate the Flagship on Photonics Research and Innovation (PREIN)
- We are part of four other flagships:
 - ACCC – The Atmosphere and Climate Competence Center
 - UNITE – Forest-Human-Machine Interplay
 - FAME – Flagship of Advanced Mathematics for Sensing, Imaging and Modelling
 - FQF- Finnish Quantum Flagship

12 ERC grantees



Current focus development areas in research

Research infrastructures at Tampere University

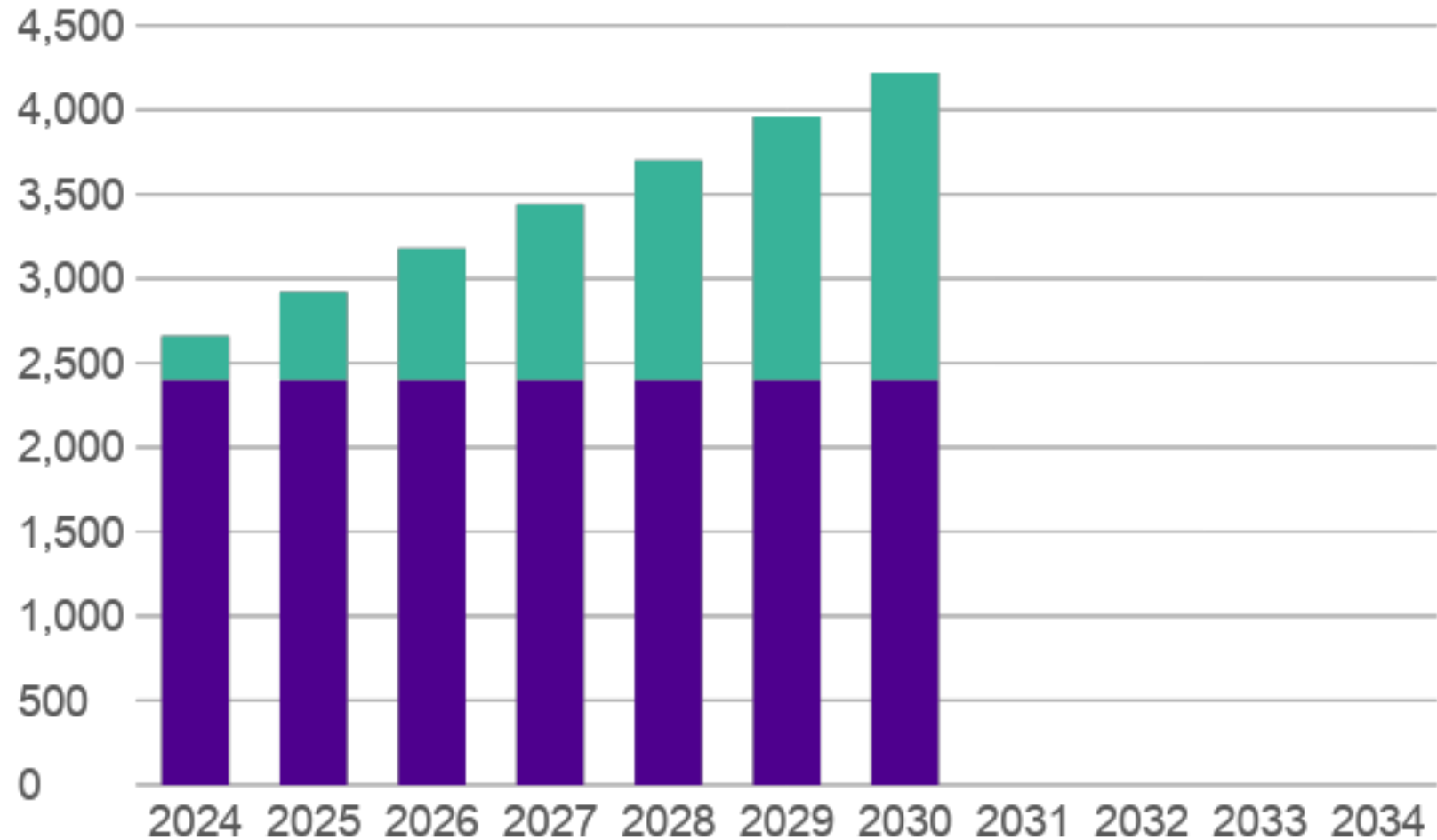
State-of-the-art research infrastructures are an integral part of the research environment at Tampere University. Research infrastructures are devices, equipment, data networks, databases, materials, software and related services that make it possible to carry out research, promote research collaboration, support training and the development of competence among research staff, and strengthen the capacity for research and innovation. Research infrastructures can be centralised, decentralised or virtual entities or combinations of these. In addition to researchers and students, equipments, laboratories, databases and materials of the research infrastructures are also available for use or hire by our collaboration partners.

- 40 million euros to build a pilot production lines for semiconductor chips
- FIRI Roadmap (Research Council of Finland)

Current focus development areas in research

Increase of government R&D funding to 1.3% of GDP

- Ministry of Finance together with other Ministeries has begun preparing for budgetary plan and budget proposal.



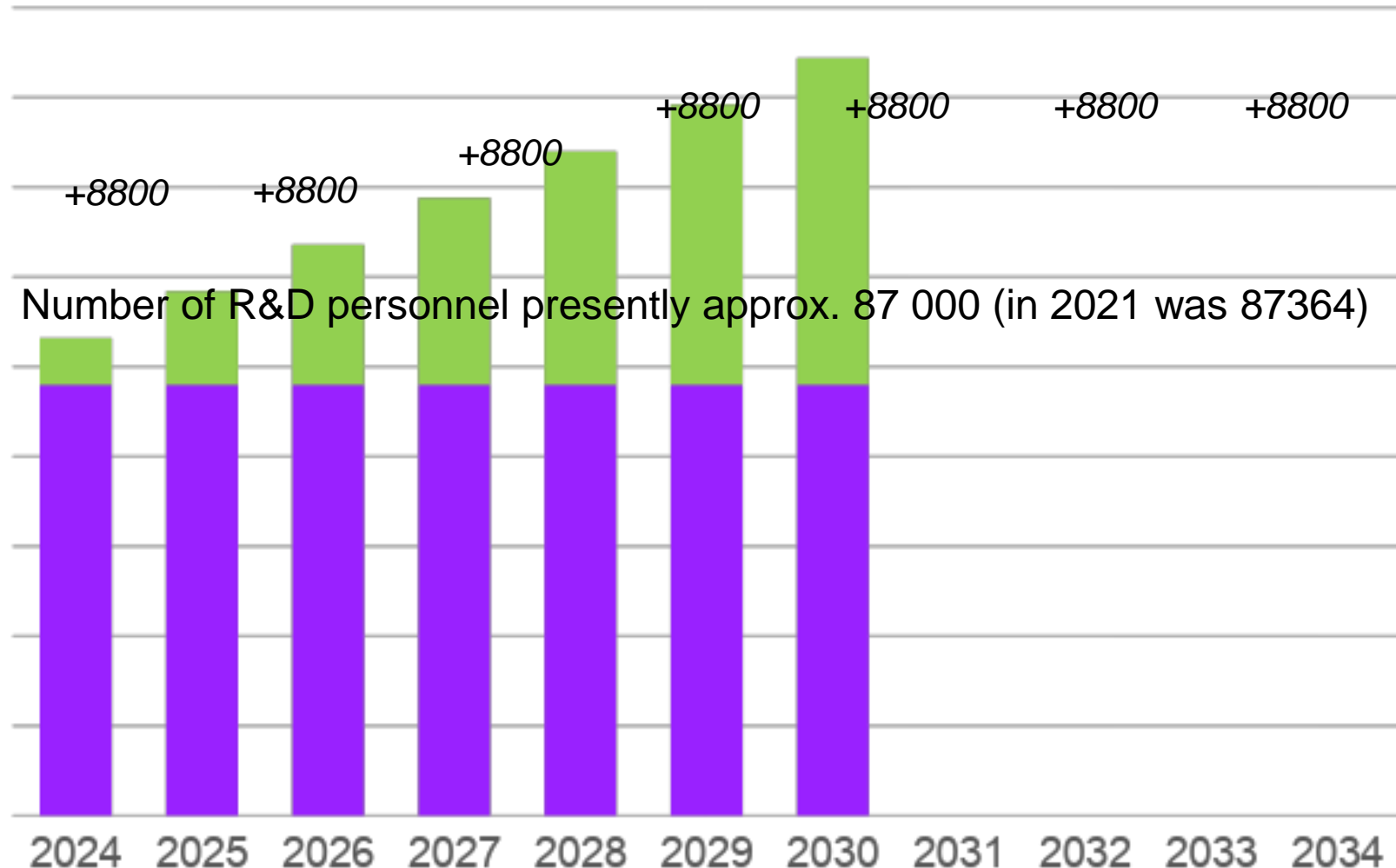
Level of government R&D funding
in 2023

Estimated increment of
government R&D funding. EUR
280 million annually

Current focus development areas in research

Significant increase of R&D personnel

- Important to anticipate the needed increase of personnel (incl. retirement).
- Relatively more funding to research infrastructures?
- No productivity gains if the money goes to pay rises.
- Maintaining quality is key.
- Increasing R&D volume, raising ambition level



Current focus development areas in research

1000 new PhDs in Finland



Doctoral education pilot at Tampere University

Tampere University will recruit 106 fully funded PhD candidates for a three-year term in calls that open in spring and autumn 2024. The posts are part of the national doctoral education pilot.

→ [Apply for these positions on our Open positions website](#)



National policies

The Declaration for Open Science and Research 2020-2025 signed by Finnish Higher Educations institutes (2020)

Policies of open science and research in Finland

Recommendations on open science and research in Finland

The Open Science and Research Reference Architecture 2024–2030

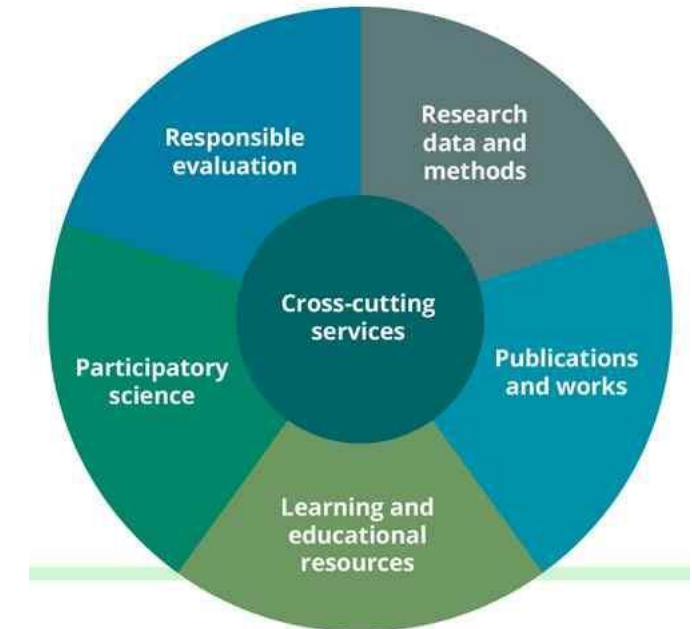
International policies

The UNESCO Recommendation on Open Science (2021)

The Declaration on Research Assessment (DORA, 2012)

Coalition for Advancing Research Assessment (CoARA, 2022)

Open Science Policy: Tampere University is a responsible and open societal influencer and partner (Jan 2024)





Human Potential Unlimited.