



Federation of Finnish
Learned Societies



Co-funded by the
Erasmus+ Programme
of the European Union

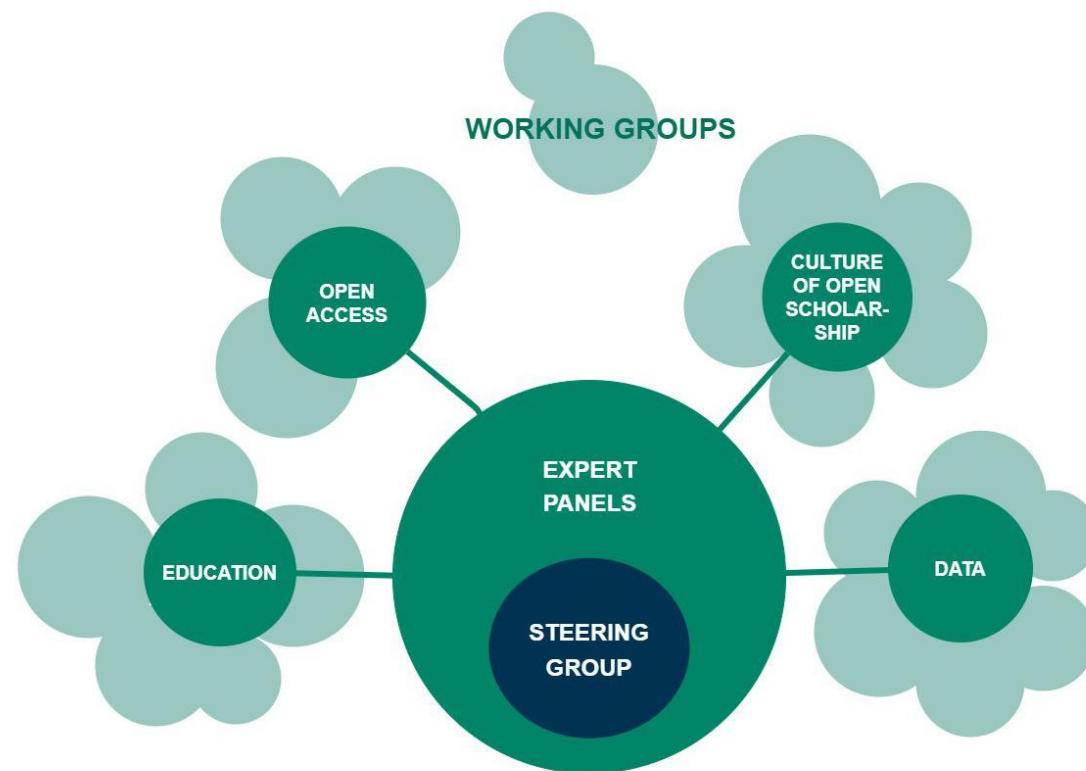
Finnish Open Science and Research Coordination as an example of OS collaboration

Contents

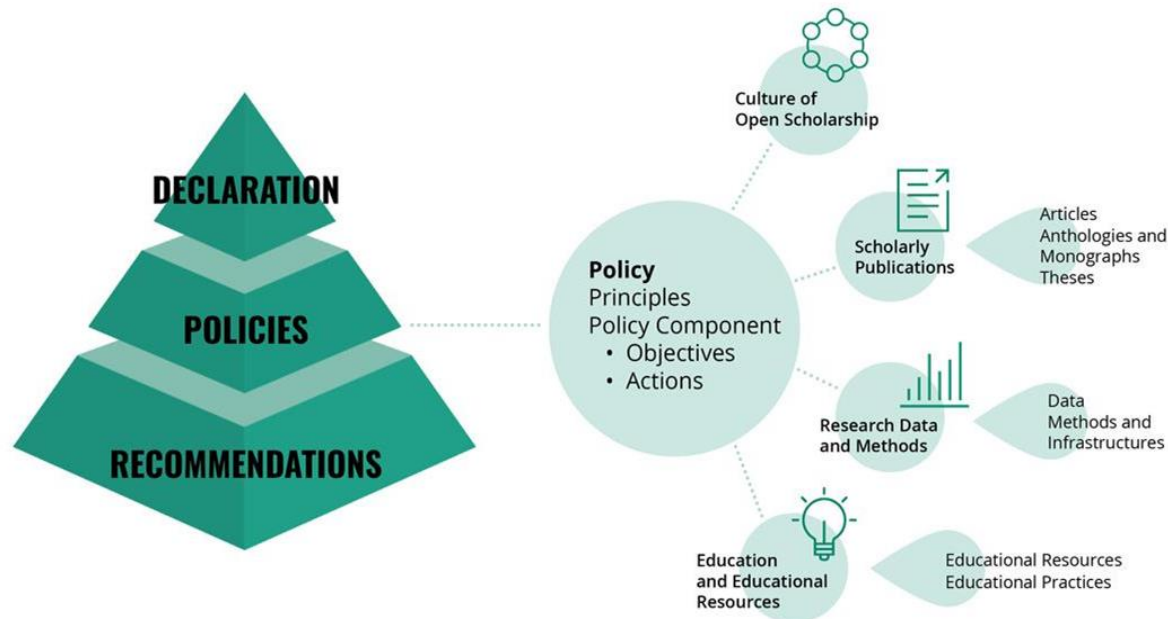
1. Finnish Open Science and Research Coordination as an example of OS collaboration
2. Our policy framework and example of policy making
3. OS monitoring
4. OS reference architecture

National Coordination for Open Science and Research in Finland

- National **Steering Group** for Open Science and Research
- Four **Expert Panels**: culture of open scholarship, data, open access, education
 - Several **Working Groups** within expert panels
- **Secretariat** at the Federation of Finnish Learned Societies (TSV) that supports the work of the coordination



National Policy Framework for Open Science and Research in Finland



- The **Declaration** for Open Science and Research (2020-2025) presents a common vision for the Finnish research community
- **Policies** outline the strategic principles, objectives and action plans necessary to achieve the vision in the declaration.
- **Recommendations** complement the policies and support their implementation.

Declaration of Open Science and Research (2020)

VISION

•

Open science and research are **integrated in researchers' everyday work** and support not only the **effectiveness of research outputs** but also the **quality of research**. The Finnish research community is an **international forerunner** in open science and research.

MISSION

•

promote openness as a fundamental value throughout the research community and its activities

•

strengthen societal knowledge base and innovation

•

improve the quality of scientific and artistic research outputs and the educational resources based on them, and the fluid mobility and impact of research outputs throughout society

BY SIGNING THE DECLARATION FOR OPEN SCIENCE AND RESEARCH 2020–2025 ORGANISATIONS AND OTHER MEMBERS OF THE RESEARCH COMMUNITY COMMIT TO THE VISION AND MISSION:

•

1. by **endorsing the strategic goals** for open science and research defined by the research community **in their own strategies** and steering work, with consideration for the characteristics of their organisations

•

2. by supporting and encouraging the everyday work of their organisation's members to **attain the objectives and goals of the policies**.

•

3. by **actively participating** in the national open science and research coordination activities.



Federation of Finnish
Learned Societies

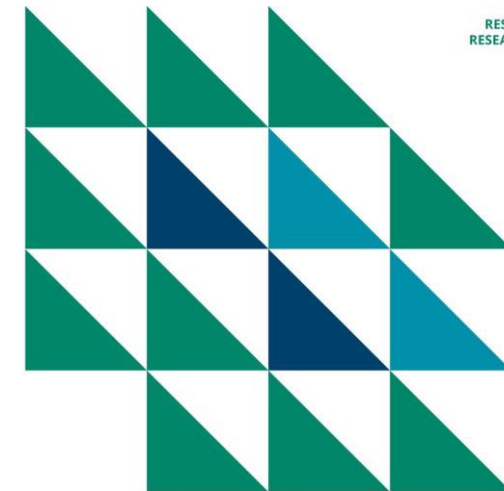


Co-funded by the
Erasmus+ Programme
of the European Union

Policy in Practice: Co- Creation

Creating the Policy for Open Access to Research Data and Methods 1/4

- **Mentimeter:** Go to menti.com, use code **8413 5318**
- The policy on open access to research data and research methods has two policy components:
 - Open Access to Research Data (2021)
 - Open Access to Research Methods and Infrastructures (2023)

RESPONSIBLE
RESEARCH SERIES
4:2023

**OPEN RESEARCH DATA AND
METHODS. NATIONAL POLICY AND
EXECUTIVE PLAN BY THE HIGHER
EDUCATION AND RESEARCH
COMMUNITY FOR 2021–2025.**

Policy components 1 (Open access
to research data) and 2 (Open access
to research methods and infrastructures)

Creating Policy for Open Access to Research Data and Methods 2/4

Strategic goal (Declaration): Research data and methods are as open as possible and as closed as necessary. The management of research data aspires to FAIR principles. Research methods and materials, including research data, are recognised as independent research outputs.

→ 3 strategic principles

- ◆ Example: “Research data, methods and infrastructures shall be managed, opened and used responsibly and appropriately.”

→ 5 objectives for data, 3 objectives for methods and infrastructures.

- ◆ Example: “By 2025, the rights and terms related to research methods and infrastructures are clearly agreed on between all participants in research work.”

Creating Policy for Open Access to Research Data and Methods 3/4

- Expert panels form working groups
- Co-creation
 - Open consultation: research performing organisations, research funding organisations, student organisations, learned societies, individuals etc.
- Publication
 - [edition.fi](#): Responsible Research Series, DOI:s
- Communications
 - Webinars or live events
 - openscience.fi, social media

Creating Policy for Open Access to Research Data and Methods 4/4

1. Open access to Research Data
 - Starting from a blank slate
 - Two successive chairpersons
 - Collaborative writing process
2. Open access to Research Methods and Infrastructures
 - Successful recruitment drive
 - Paid secretary
 - Collaborative editing process



Federation of Finnish
Learned Societies

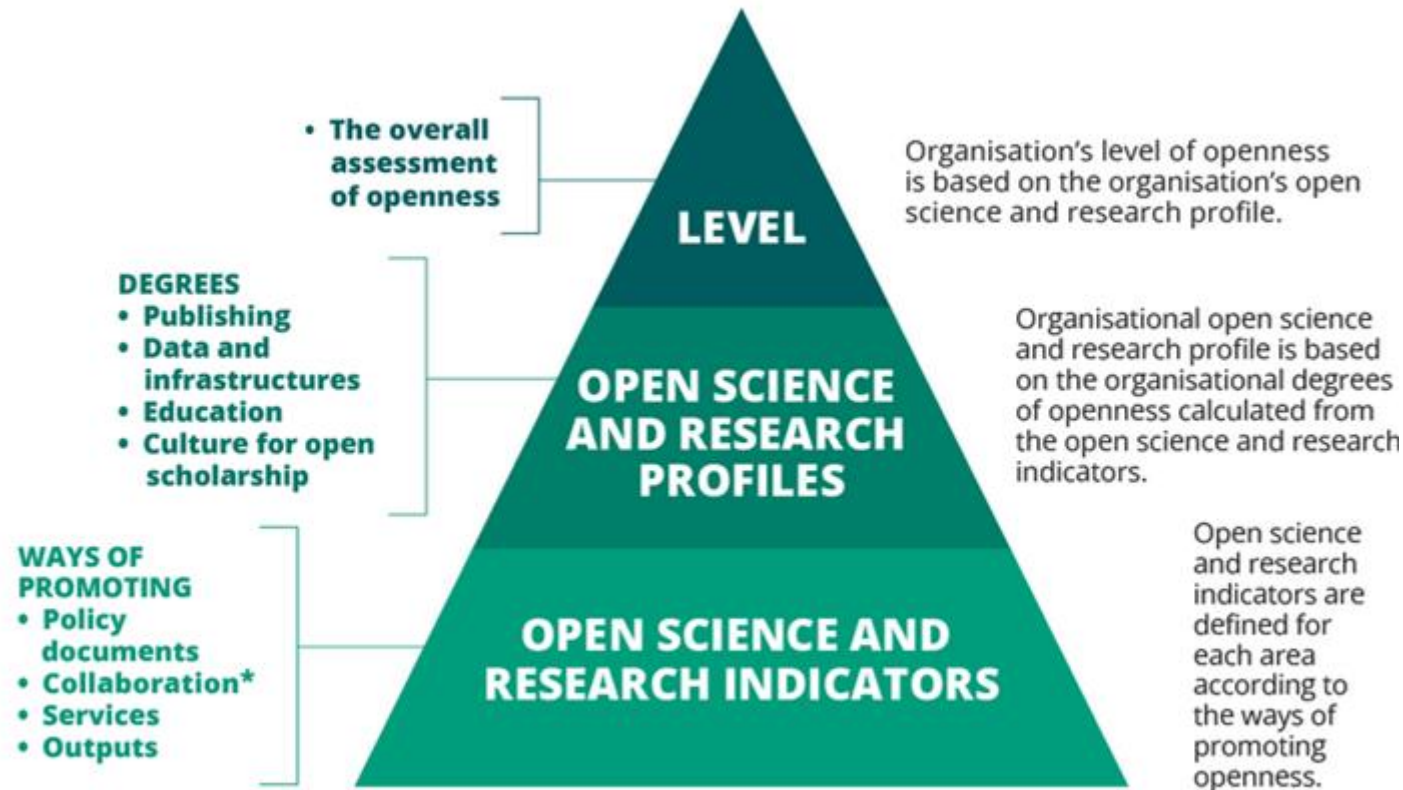


Co-funded by the
Erasmus+ Programme
of the European Union

Finnish Open Science and Research Monitoring

The national open science monitoring model

MONITORING ELEMENTS



* Monitored from 2024 onwards

- The indicators of the monitoring model are based on the objectives of *the Declaration for Open Science and Research* and the supporting policies.
- The key open science and research objectives are widely discussed and endorsed by the Finnish research community through policy work.

Monitoring principles

- Supports organisations rather than ranks them
 - Research performing organisations monitored from 2022
 - Monitoring of research funders planned for future
- Uses existing data sources
- Focus on objectives in *the Declaration for Open Science and Research 2020–2025* and its supporting policy documents, but also aligned with European Open Science monitoring
- Every other year
- Developing set of indicators
- Not directly used for funding decisions by the Ministry of Education and Culture

Results in Research.fi

Profiles of openness by sector can be examined in [Research.fi portal visualisation](#).

Profile of openness

[Keyboard user help](#)



Monitoring 2024 in preparation



- New indicators for monitoring 2024 were co-developed in the OS expert panels.
 - Indicators for collaboration
 - Quantitative indicators for research data
- Indicators used in monitoring 2024 confirmed in the Steering Group in May 2023
 - In the following monitoring cycles, indicators will be confirmed 18 months prior to the survey.
- Next monitoring survey will be carried out in May 2024.
- Monitoring results 2024 will be released in October 2024.



Federation of Finnish
Learned Societies



Co-funded by the
Erasmus+ Programme
of the European Union

Open Science and Research Reference Architecture

What it is?

- **Mentimeter: Go to menti.com, use code 8413 5318**
- National policy framework requires a manual or toolkit for implementation
 - Finnish public sector uses widely enterprise architecture method for implementation of strategies => compatible and interoperable with other related reference architectures
 - Similar results could be achieved through other methods (e.g. service design)
- National reference architecture provides guidelines for enterprise architectures of individual organisations

How was it developed?

- Working group appointed by Steering Group for two years (2022-2023)
 - Representatives from RPO networks, important national service providers, research libraries, museums and archives, HEI IT networks, researcher unions, open science experts
 - Divided into more specific task groups
 - Also dedicated workshops for more extensive group of experts
- Public commenting round in spring 2023
 - 36 very detailed comments
 - Comments processed by the task groups
- Final approval of the Reference Architecture by the Steering Group on December 2023
- Publication of the Reference Architecture 19th of March, 2024

What does it contain?

- Level of principles:
 - Description of general framework, including important legislation, other reference architectures and international strategies
 - Capabilities and resources required
- Business architecture:
 - Analysis of central actors and their interactions
 - Analysis of services required

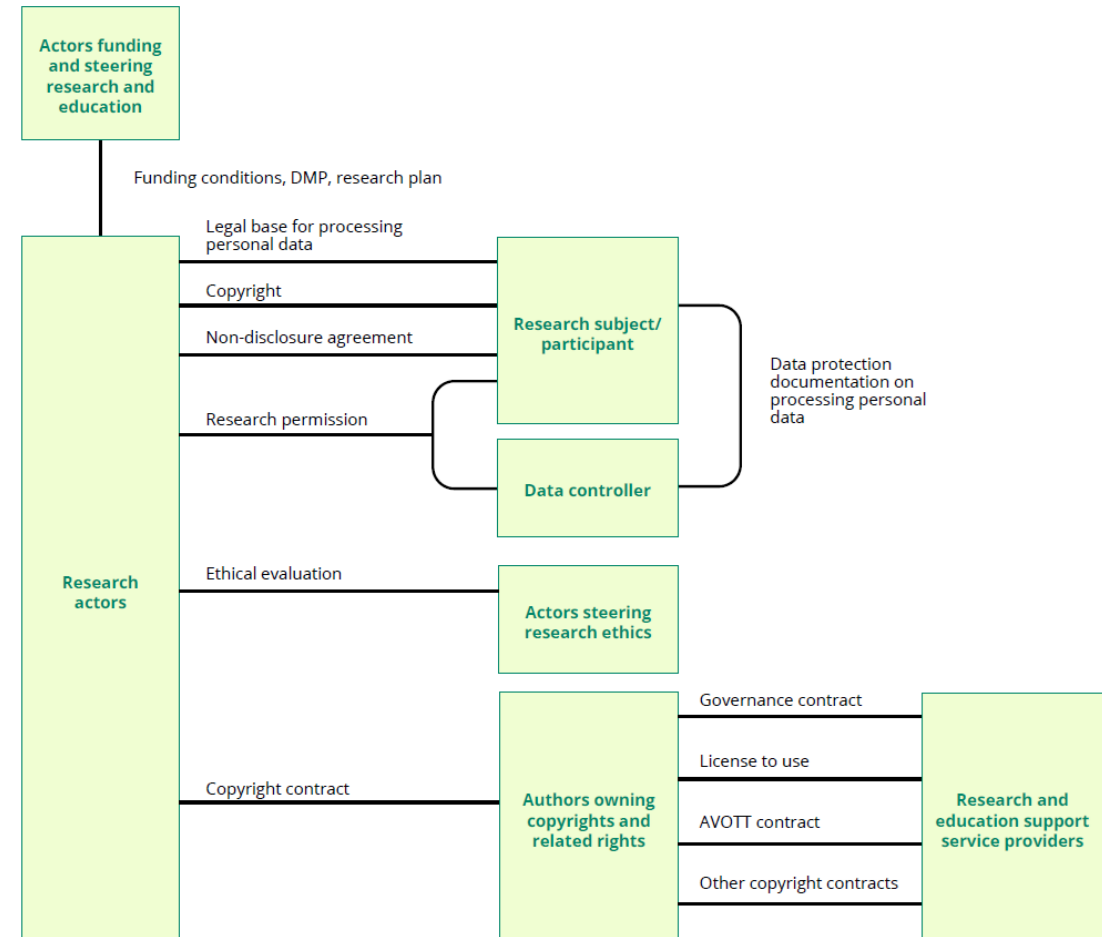
Capabilities and resources



- Capabilities: what abilities the Finnish research community must have to implement the Open Science policies
 - Operational capabilities: required for practical research and teaching
 - Supporting capabilities: organise, develop and support activities. Also includes administrative capabilities.
 - Strategic capabilities: transform and steer the research community towards greater openness and responsibility
- Each capability analysed into required resources (a) competences, b) processes and c) information and information systems)

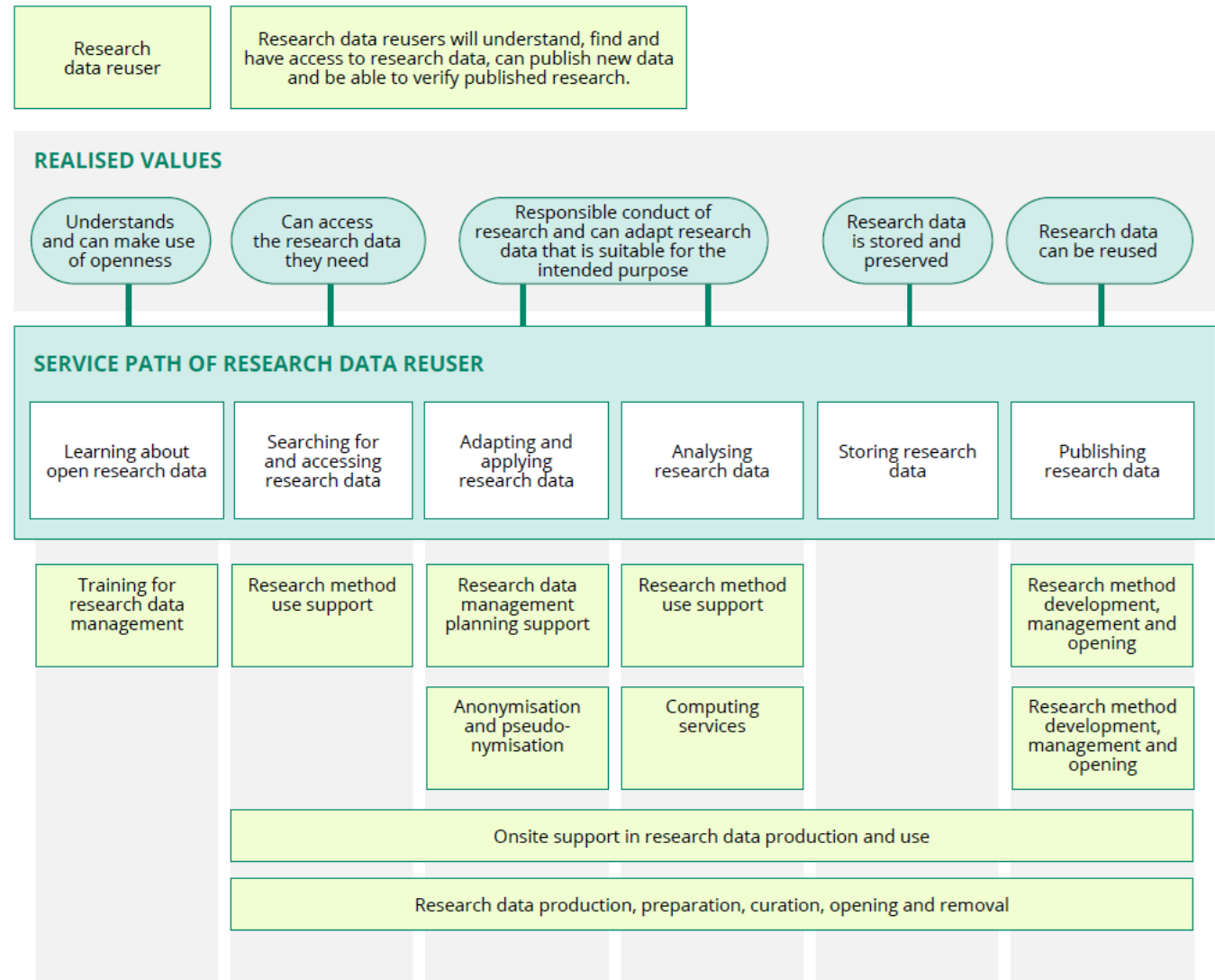
Actors and interactions

- Actors divided into roles
 - Funders
 - Evaluating actors (e.g. research integrity evaluators)
 - OS enablers (take part in national OS coordination)
 - Original copyright owners (authors)
 - Copyright holders (e.g. publishers)
 - Support services
 - Research actors
 - OS users
- Especially interactions involving contracts and legal issues analysed



Services

- Services classified into
 - Overarching services
 - Open publication services
 - Research data services
 - Open education services
 - Responsible evaluation services
 - Participatory science services
- Each service analysed
 - Level of service (local, national, international)
 - Maturity of service (implemented well, partially or poorly)
 - Processes required by the service
- Service paths shows the services required by customers at different points



Contact information

- More information at openscience.fi
- Contact us at avointiede@tsv.fi

Mentimeter: Go to menti.com, use code 8413 5318



Federation of Finnish Learned Societies

avointiede@tsv.fi